

COMMERCIAL ROLLER SHADE

MEDIUM 4" FASCIA

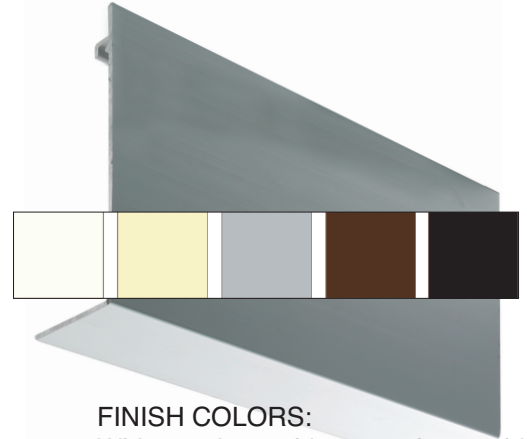
MANUAL CLUTCH CONTROL



The Commercial roller shade medium 4" fascia roller shade features a modern square cover, concealing the hardware for an aesthetically pleasing solution. Designed to deliver a simple user experience, this system is constructed with a sturdy fiberglass base scrim, enables complete thermal and light control, and embraces a sophisticated aesthetic. With minimal light gaps, increased privacy, view through and sustainability, setting the benchmark for natural light management.

Features:

- Advanced bracket offers two-way vertical adjustment for precise alignment.
- Commercial grade aluminum fascia is powder coated or anodized for durability.
- Enables view through and privacy with minimal light gaps.
- Stainless chain rated to 120 pound pull force.
- Built-in chain diverter for a notch-less design.
- Clutch disengages to 90% of holding capacity.
- Single and linked shade applications.
- Max width of 120" (based on 120" drop) before linking. Capacity to cover area up to 100 sqft.



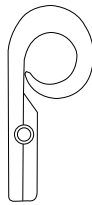
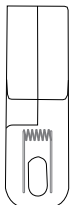
FINISH COLORS:
White, antique white, gray, brown, black



Match this solution with any of our screen, blockout or high performance fabrics for a complete finished solution.

CHILD SAFE OPTIONS

Chain Hold Device



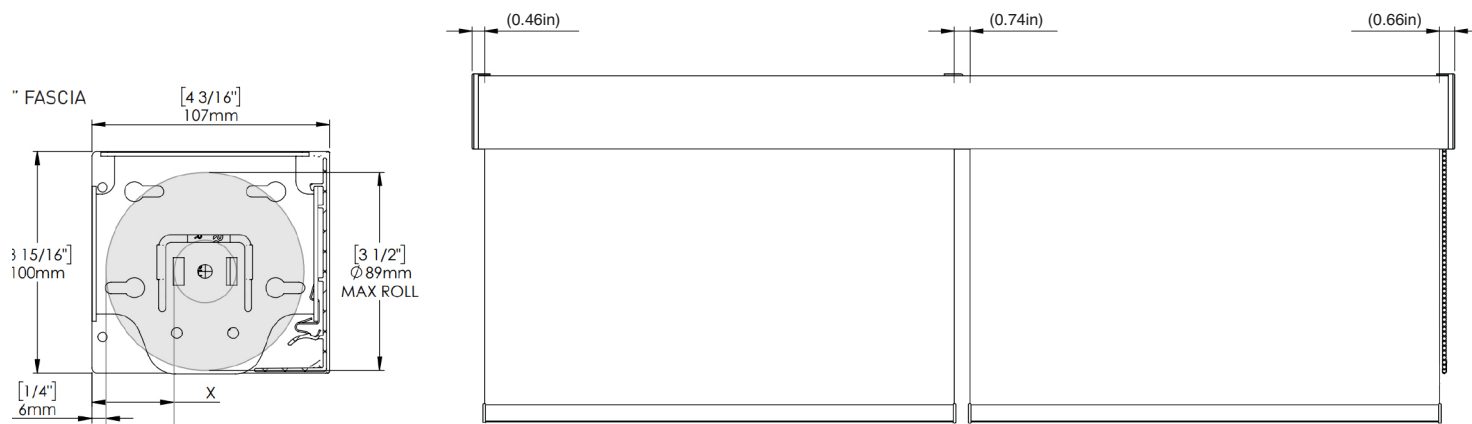
CHAIN OPTIONS

Stainless Steel or NPS

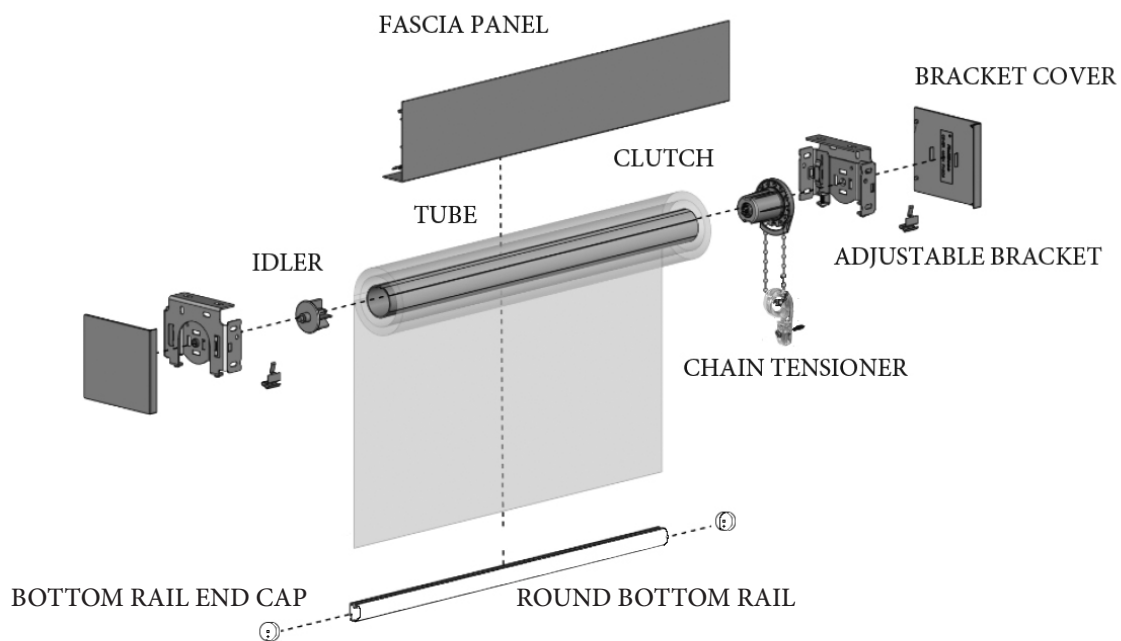


APPROXIMATELY 50-51 BALLS PER FOOT
• Nickel plated steel: Avg. Tensile strength 50 lbs
• Stainless Steel: Avg. Tensile Strength 120 lbs

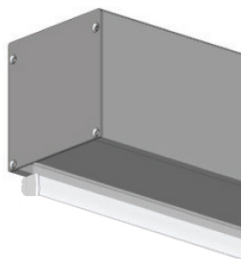
FRONT & SIDE VIEW



SCHEMATIC



SYSTEM UPGRADES



5" Pocket
(for hidden recess mounts)



Edge Side Channels
(for improved light blackout)